

# ShareTheBoard

Intelligent Whiteboard Enhancement  
for education

Turn traditional boards into  
globally-accessible and  
intelligent teaching devices



## Whiteboards are instantly-intuitive in their operation.

Whiteboards reduce Cognitive Load for both the presenter and viewer, allowing all participants to communicate more complex information effectively.



## Whiteboards are human-optimized and proven to increase recall.

Whiteboards are built around natural movements and reflect optimal speed of information transfer between humans. The mere sight of such movements increases information recall.

*Compared to slide-based lectures...*

**~90%**

improvement in visual attention to key elements

**~20%**

improvement in information recall

**~10%**

improvement in audience engagement

**~10%**

improvement in perceived quality, credibility and presenter authority

# 1

## You may not be using the right tool for the job

- Over-reliance on slides is proven to reduce engagement and recall
- Digital look-alikes do not produce the same effect as traditional boards



# 2

## You're not reaching everyone in your classroom

- Students joining remotely or sitting in further rows are at a disadvantage
- Visual and hearing impairments may be preventing students from participating



# 3

## Your students are not focused on your teachers; others may be falling behind

- Copying board contents is not the same thing as taking good notes
- Students with learning disabilities may not be keeping up with the pace of class



# 4

## You're straining your most precious resource

- New tools cannot put additional burden on teaching staff
- When asked what they needed more of, teachers almost always replied: "Time!"



# ShareTheBoard

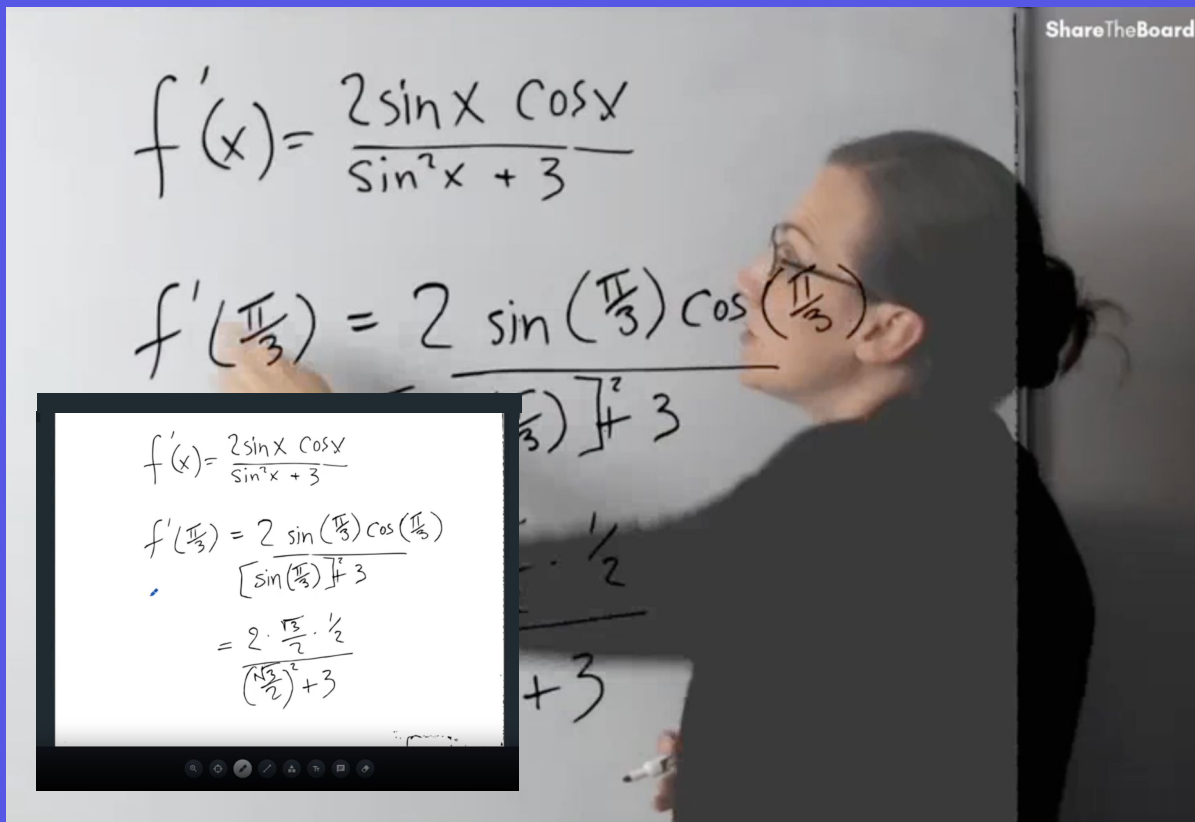
is the only tech-agnostic  
whiteboard AI solution

It enables educators to deliver a front-row experience to every student by instantly turning analog surfaces into globally-accessible, interactive, and intelligent teaching devices



First of all, **use the right tool** for the job

**ShareTheBoard**



ShareTheBoard

$$f'(x) = \frac{2 \sin x \cos x}{\sin^2 x + 3}$$
$$f'\left(\frac{\pi}{3}\right) = \frac{2 \sin\left(\frac{\pi}{3}\right) \cos\left(\frac{\pi}{3}\right)}{\left[\sin\left(\frac{\pi}{3}\right)\right]^2 + 3}$$
$$= \frac{2 \cdot \frac{\sqrt{3}}{2} \cdot \frac{1}{2}}{\left(\frac{\sqrt{3}}{2}\right)^2 + 3}$$

Digital annotation window:

$$f'(x) = \frac{2 \sin x \cos x}{\sin^2 x + 3}$$
$$f'\left(\frac{\pi}{3}\right) = \frac{2 \sin\left(\frac{\pi}{3}\right) \cos\left(\frac{\pi}{3}\right)}{\left[\sin\left(\frac{\pi}{3}\right)\right]^2 + 3}$$
$$= \frac{2 \cdot \frac{\sqrt{3}}{2} \cdot \frac{1}{2}}{\left(\frac{\sqrt{3}}{2}\right)^2 + 3}$$

An always-legible board - with or without teachers in front of it - means that every student enjoys a Front Row Experience

Digital annotations ensure that all participants can contribute directly to the board - wherever they may be

”

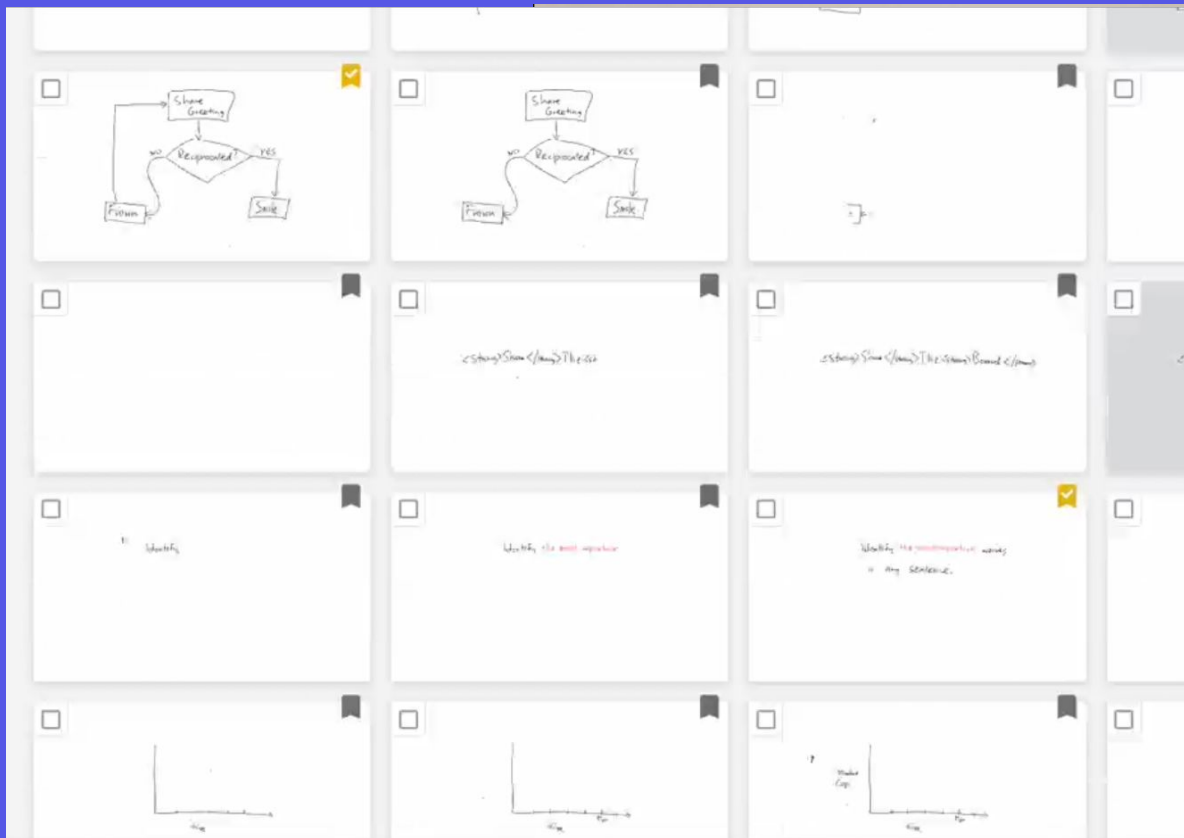
ShareTheBoard allows me to use a real white board. I have yet to find a better alternative when teaching Greek [in any modality].



**Teresa Danze**  
Associate Professor  
University of Dallas

# Give all your boards **memory**

**ShareTheBoard**



Students are more likely to focus on their teacher and her instructions when not focused on copying board contents

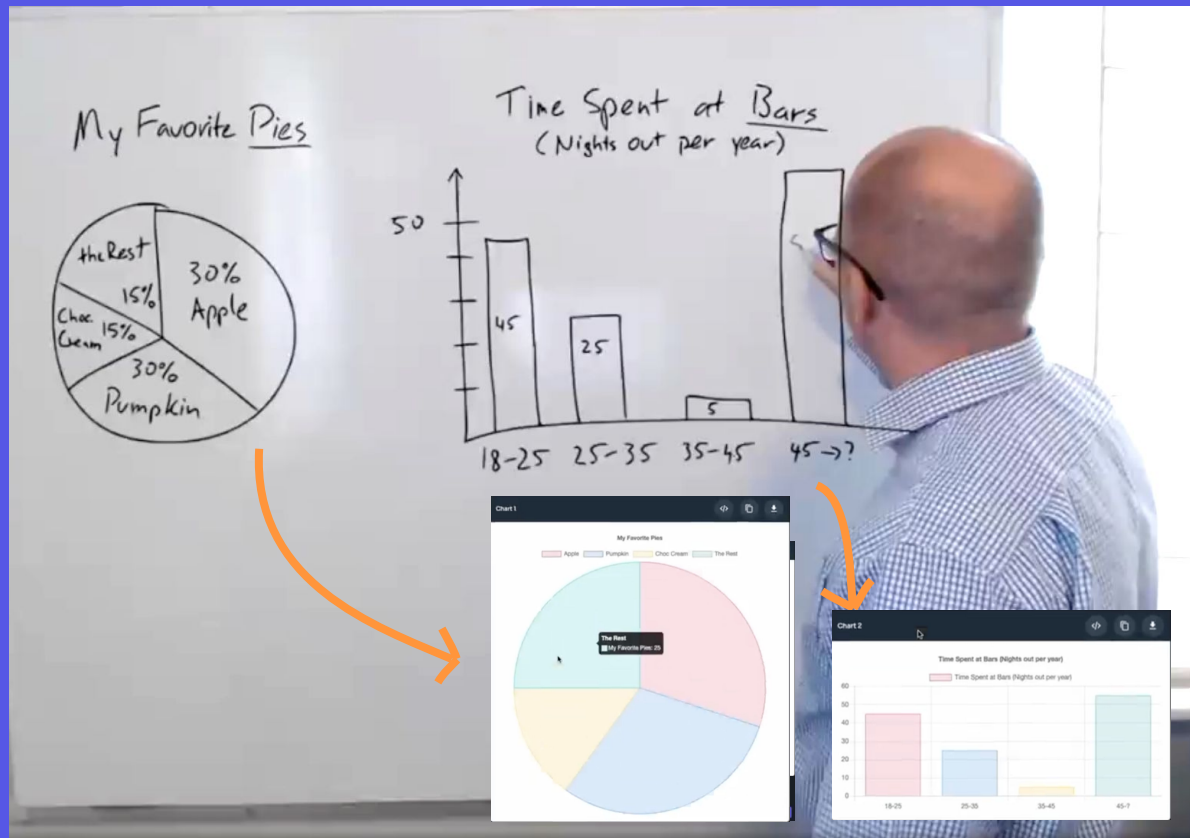
Students with learning disabilities or scheduling conflicts have a chance to (re)reference classroom board work



ShareTheBoard allows remote lessons to be performed “live” instead of just watching a recording or using some app.



**Allison Paten**  
2nd Grade Teacher  
Monroe Central School



ShareTheBoard's exclusive Intelligent Transcription captures handwriting as digital content, in the correct format

Teachers can easily convert board contents into study guides or exams, saving valuable time



I think ShareTheBoard has potential to make learning more interactive. It's easy to use with just a basic knowledge of zoom.



**Angela Stefanski**  
Literacy Studies Professor  
Ball State University

# Ensure a **level playing field** for every student

# ShareTheBoard



True accessibility solutions do not put the onus of access on the student - they're available without stigma or disruption

By identifying and transcribing board content in real time, STB enables many customizable accessibility solutions

”

ShareTheBoard takes digital learning to a whole new level. It makes it much easier to teach students in person and remotely at the same time. Students are more engaged because they can interact with instruction in a more meaningful way.



**Sarah Watson**  
Computer Science teacher  
East Elementary,  
South Madison CSC



## Extreme Cost Effectiveness:

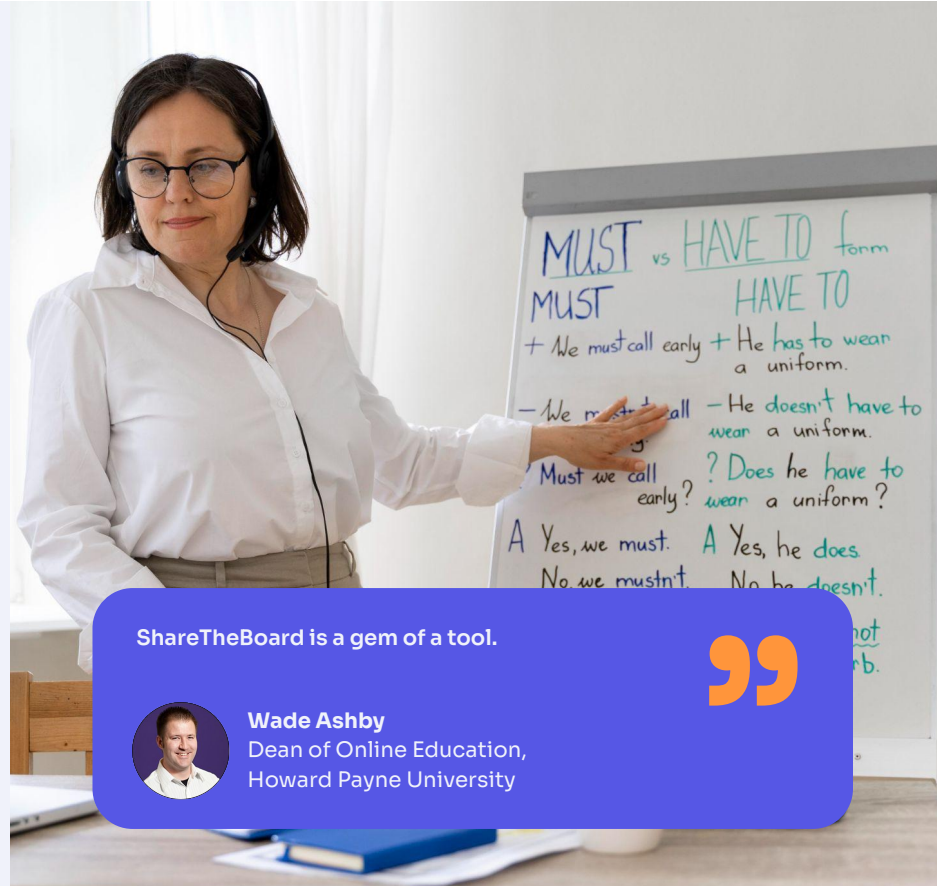
ShareTheBoard is instantly scalable, naturally mobile, and categorically more cost effective than specialized classroom equipment that aims to solve similar problems.

## No Adoption Phase:

ShareTheBoard requires no training from your educators. When properly deployed, it is instantly intuitive - just like the whiteboard itself.

## Tech Agnosticism:

No need to shake up your infrastructure - ShareTheBoard works with the software and hardware in which your school has already invested.



ShareTheBoard is a gem of a tool.



**Wade Ashby**  
Dean of Online Education,  
Howard Payne University

# Flexible Plans for Every Organization

ShareTheBoard

	<b>TEAM Version</b> 1 license = 1 user	<b>Room License</b> 1 license = 10 users, 1 room	<b>ENTERPRISE Version</b> 1 license = 1 user
Students per session	up to 100	up to 100	unlimited
Concurrent presenters	unlimited	1 per room	unlimited
Size of organization	Up to 50 presenters	Up to 500 presenters	unlimited
Custom Deployment Options (private cloud, fully on-prem)	-	-	✓
Custom Integrations, Annotations, and LLMs	-	-	✓
SLAs and Custom Support	-	-	✓

Book your **free demo** today

**ShareTheBoard**



Book a free  
demonstration

Select date/time



**Thank you.**

**ShareTheBoard**

### ShareTheBoard

- Dashboard
- Edit Profile
- Organization**
- Plan Details
- Shared Devices
- Apps

Team Version

App Settings

### Organization

**ShareTheBoard**

**Domain**  
sharetheboard.com

**Organization Address**  
ul. Czysła 10/5 31-121 Kraków, Poland

[Edit](#)

### Your Logo

Upload Your Logo

Drag & Drop  
or Browse Files

Max allowed size: 140x48  
Larger Images will be resized while keeping the original aspect ratio

Supported formats: JPEG, JPG, PNG

### Organization Settings

Show Desktop App tab for organization members

On Auto-save & Board Memory

Off Allow auto-save data sharing inside the organization

### Licenses 0/10


[+ Assign New License](#)

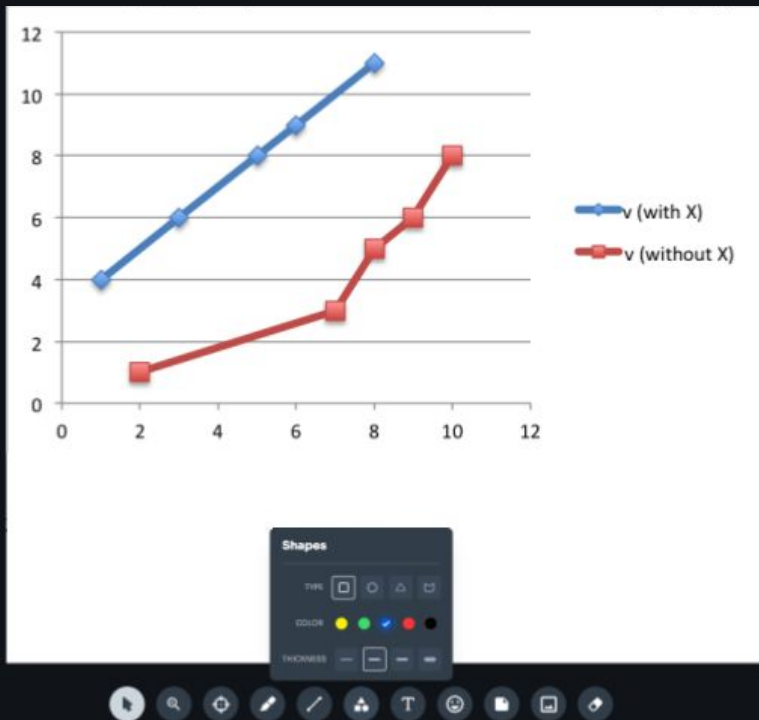
#	E-mail	Name	Invitation	Role

Integrate ShareTheBoard with your school's most critical tools. Boost productivity, save time, and maximize return on existing investments.

Common integrations include: video conferencing and AV tools, information management systems, productivity tools.

Sample integrations:





Customize this toolbox for your school

Customize the digital tools available to your teachers and students to maximize engagement and classroom productivity.

Apply specialized characters, drawing tools, or even manipulable functions (e.g., graphing or tables).

”

Often times language skills can only take us so far. Remote sessions can run their course without everyone truly understanding your point. Many people are visual learners and a product like ShareTheBoard can help bring additional insight instead of frustration.



**Matthew Decker**  
VP of Technology



Employee	MQL	SQL	Lost	Won
Aneta	24	11	3	3
Beata	62	21	19	1
Cecylia	107	89	24	37
Darek	46	18	7	6

```
graph TD; A[DB review] --> B{Matches Profile?}; B -- YES --> C[New Campaign]; B -- NO --> D[Update DB]; C --> E{Response?}; E -- YES --> F[Book Meeting]; E -- NO --> G[Last follow-up];
```

NOTE:  
\* Please copy these results as they will not be stored.  
\* The diagrams, block schematics, UML, etc. are provided in Mermaid format.

Table 1

Employee	MQL	SQL	Lost	Won
Aneta	24	11	3	3
Beata	62	21	19	1
Cecylia	107	89	24	37
Darek	46	18	7	6

Mermaid 1

```
graph TD; A[DB review] --> B{Matches Profile?}; B -- YES --> C[New Campaign]; B -- NO --> D[Update DB]; C --> E{Response?}; E -- YES --> F[Book Meeting]; E -- NO --> G[Last follow-up];
```

The <strong>Board </strong>

Plug in your own LLM in place of the default option (ChatGPT) and benefit from your school's knowledge and taxonomy.

Prompts tailored to your organization maximize productivity of all your teachers. Custom (open) prompts are also available.

Customize visualization logic to maximize benefit of Intelligent Transcription: contents reflect your school's preferred formats or even brand guidelines.

Note: Custom LLMs must support image processing.